

Faith In Practice

Life Changing Medical Mission

A Part of Me is Missing



Ash Wednesday, the day we remember that the **Lord God formed man from the dust of the ground and breathed into his nostrils the breath of life.** The day we ask the Lord to breathe new life into us yet again as we begin our journey from brokenness to wholeness by following him to his cross, to his rising. Our Lenten Journey.

Lenten Mourning: God's Absence

One year ago, we stood on the threshold of Ash Wednesday and Lent without knowing what awaited us. Now, it is as if this entire past year has been a Lenten journey, a time of lament, as we have collectively held our breath in anticipation of Easter's dawning. In many ways, this time has been infused with the true meaning of Lent, a time to sit with a sense of God's absence in order to more fully embrace God's presence among us. An opportunity to embody more fully how much we need God's breath to course through us in times of trial as we strain toward his Easter's dawning in a very real and raw way. I know that has been the case for so many of us personally. It certainly has been the case for Faith In Practice.

Lenten Preparation: A Flurry of Activity

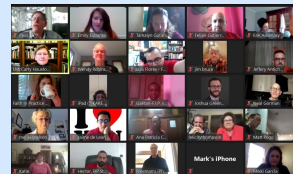
But Lent is not only a lament, it is also a time of preparation. A time to prepare for the new life that shall surely shine forth on Easter morning. And, we are preparing! Preparing with deep gratitude and

Our Amazing Volunteers



We are inspired by our volunteers who are always finding ways to serve! Team leaders Katherine Bullard (above), Felicity Thompson, Bethany Delk, along with Mary Lewis Griffin, and Christa Brooker, among others, have been administering COVID-19 vaccines in their local communities.

Roundtables and Team Meetings



Each month our dedicated team leaders are participating in scheduled Zoom calls on topics such as supplies and medicines, COVID-19 preparedness, and logistics. Individual team leaders are also participating in roundtable discussions with staff, on a rolling basis, as they delve deeper into specific specialties and aspects specific to their teams.

Leaving for Guatemala on May 1st, the Parsley/Woolf Team was our first roundtable, and we already have their full patient list!

Arelyn and Emma

overflowing with joyous hope.

Two containers headed to Guatemala filled with PPE and supplies and medicines. Monthly Zoom calls with all team leaders chock-full of information about what to expect from the moment they land at the airport to the moment they return to the U.S. roundtable Zoom calls for each specific team to thoroughly discuss each detail, patient lists, x-rays, and supplies, all to make sure that each team member is prepared and knows what to expect. Constant tweaking of contingency plans to ensure a safe and successful return to Guatemala for our volunteer teams.

Our volunteers and staff are energized! You can see in the side bar articles there is so much happening as we prepare. In addition to ongoing telemedicine clinics, mobility clinics, and monthly health basket deliveries, staff are heading out to the villages working beside our Guatemalan volunteers to organize clinics and work with already identified surgical patients for the first teams. We are strategizing with our partner hospitals as together we navigate reopening the surgical program as expansively as is safe and navigating challenges that are creating new possibilities for partnerships and ways of expanding how we serve.

Lenten Anticipation: A Part of Me Is Missing

There is so much to do. Such a flurry of activity. So many details to manage. Everyone is coming to the task with passion and innovation and creativity. And underlying it all, is an excitement that is borne out of a deep longing. A longing to be together again. As one volunteer put it when speaking of missing Guatemala, "It feels as if a part of me is missing."

The anticipation of being together is building as we remember the richness and depth of our time together when working side by side through Faith In Practice in Guatemala. This longing may be expressed by a U.S. or Guatemalan volunteer or a Guatemalan board member or one of our partners. But, the sentiment is the same. We all feel as if a part of us is missing and we cannot wait until we can be together again. For, as you all know, this mission holds healing within it, not only for our patients but for each of us as well.

Paul wrote in Romans: ***I long to see you so that...you and I may be mutually encouraged by each other's faith.*** That is what we are longing for, anticipating, during this time of Lent. That is the



Each and every week children and adults are receiving wheelchairs, crutches, walkers, medical checks, medicines, and even surgical referrals. Thank you for making it all possible.

[Check out this video giving a behind-the-scenes look at our mobility clinics!](#)

Hilario Galindo Hospital



In March, we are installing solar panels and central suction at Hilario Galindo as it continues to become a well-respected health center in Western Guatemala and as we prepare for the Bullard team to arrive.

Stay tuned for pictures!

On the Road



Jalapa, Santa Rosa, El Petén, and more, here we come! In February and March, Felipe Gutierrez and Tagni Moncada are conducting extensive advance trips to prepare for our village medical clinic teams. The Robinson team will be the first out!

[Read more here](#)

quiet longing that resides at the very heart of all this bustling excitement. The longing to feel the Lord breathing new life into us as together we are mutually encouraged by the other's faith. As together we feel our brokenness mend and melt into a kind of wholeness for which we all long. The kind of wholeness that brings us back year after year to our beloved Guatemala. Guatemala, where we meet the One whose footsteps we now follow as he leads us on our Lenten Journey, as he leads us home yet once again.

In gratitude to each of you whose faith always, always encourages me, encourages all of us,

Rev. Linda L. McCarty
President & CEO

*Our first team will arrive in Guatemala on May 1.
Please hold all of our teams and staff in prayer in
the days and weeks ahead.*

*For more information see the most recent
[CEO Update](#).*

Lenten Challenge



Are you giving up something for Lent or reflecting on what you had to sacrifice this year? Consider donating what you would have spent on these items or activities to provide support to our Guatemalan patients or commit to praying for our teams daily as they prepare to return to Guatemala.

[Join the Challenge](#)

To make a general donation, click the Donate Now button below.



Copyright © 2020 Faith In Practice, All rights reserved.

[Forward to a Friend](#)

Our mailing address is:

7500 Beechnut St., Suite 208 - Houston, Texas 77074

Want to make a life-changing gift? You can [donate now](#) online.

Want to change how you receive these emails?

You can [unsubscribe from this list](#)